

flymatic

Fly Killer Instruction Manual



For Models: IK-GC1-16/20/30/40

Contents

1. Introduction	p4
2. Warnings	p4
3. Caution	p4
4. Safety Tips	p5
5. Product Description & Coverage	p5
6. Pack Contents	p5
7. Installation	p6
8. Placing Your Fly Killer	p6
9. Operation	p7
10. Cleaning, Care And Maintenance	p7
11. How Often Should UV Lamps Be Changed And Why?	p7
12. Changing The Lamp	p8
13. Troubleshooting	p9
14. Technical Specifications	p9
15. Electrical Wiring	p10
16. Compliance	p11

1. Introduction

Please take a few moments to carefully read through this manual. Correct maintenance and operation of this machine will provide the best possible performance from your Flymatic product.

Remove flying insects without the use of chemicals, sprays or traps. Flymatic insect killers use Ultra-Violet rays to attract light sensitive insects such as flies and moths. These insects are killed when they come into contact with an electrocuted metal grid. A removable collection tray catches them for easy cleaning. Ideal for houses, factories, food outlets, cold rooms, hospitals and anywhere that needs to be kept clear of flying insects.

2. WARNINGS!

- High Voltage: Disconnect power before repairing or cleaning
- Keep away from children
- Hang or mount in a place where it is inaccessible to children
- Never put metal objects inside the grid while in operation
- Keep away from flammables
- Check the local voltage before operating
- If damaged, supply cords must be repaired or replaced by a qualified technician
- Do not use in barns, stables or similar places
- Clean the collection tray regularly

3. Caution

This appliance is not intended for use by persons (including children) with reduced physical, sensory, or mental capabilities or lack of experience or knowledge, unless they have been given supervision or instruction concerning use of appliance by a person responsible for their safety

4. Safety Tips

- A service agent/qualified technician should carry out installation and any repairs if required. Do not remove any components or service panels on this product.
- Consult Local and National Standards to comply with the following:
 - Health and Safety at Work Legislation
 - BS EN Codes of Practice
 - Fire Precautions
 - IEE Wiring Regulations
 - Building Regulations
- Always switch off and disconnect the power supply to the appliance before cleaning.
- Install the appliance out of the reach of children.
- Never insert hands or other objects into the appliance while it is connected to the power supply.
- Install the Fly Killer at least 1 metre away from food preparation areas.
- Never use near flammable objects.
- For **INDOOR** use only.
- Keep all packaging away from children.
- If the power cord is damaged, it must be replaced by an Flymatic agent or a recommended qualified technician in order to avoid a hazard.

5. Product Description & Coverage

Model	Lamp Type	Room Coverage
IK-GCI-16	2 X 8W	50m ²
IK-GCI-20	2 X 10W	80m ²
IK-GCI-30	2 X 15W	100m ²
IK-GCI-40	2 X 20W	150m ²

6. Pack Contents

The following is included:

- Fly Killer
- Instruction manual
- Hanging chain

Flymatic prides itself on quality and service, ensuring that at the time of packaging the contents are supplied fully functional and free of damage. Should you find any damage as a result of transit, please contact your Flymatic dealer immediately.

7. Installation

Note: Ensure the mounting substrate and the fixings used can support the weight of the appliance. If in doubt seek professional advice or assistance.

1. The unit can be wall mounted, suspended from a ceiling or used freestanding.
2. Remove all packaging and protective film from the Fly Killer.
3. For best results, locate the Fly Killer in the darkest part of the room, but at least 1 metre away from food preparation areas.

Note: Close proximity to other light sources such as sky lights and windows will reduce the effectiveness of the Fly Killer.

4. Screw in a suitable fixing to enable you to hang the unit on a wall or from the ceiling. The fixing should be appropriate for the surface the unit is to be mounted to and strong enough to safely take the weight of the unit.
5. Attach the chain provided to the unit by lifting up the two metal tabs positioned one on each side at the top of the insect killer (carefully turn the unit upside down and the tabs will drop down to enable you to gain access to the mounting holes).
6. Hang the unit by its chains, connect the appliance to mains power and switch on.

8. Placing Your Flymatic Fly Killer

Every application is unique, so each installation requires an individual assessment for fly killer siting, however there are some basic principles which should be followed:

- Use enough units to cover the area to be protected.
- Install the unit away from sources of light competition, such as windows, doors and high powered luminaries.
- Consider sources of heat and airflow.
- Do not install units directly above sensitive areas, such as food preparation areas.
- Consider access for installation and future servicing.
- Wherever possible, fly killers should be positioned at 90° to sources of natural light, such as windows, doors and skylights.
- The unit should be positioned in between potential entry points, so as to intercept flying insects before they reach sensitive areas.
- The unit should not be sited either too high or too low in the area to be protected, with an optimum height of around 2m.

9. Operation

WARNING: Under no circumstances should hands be placed anywhere near the high voltage grid when the appliance is operational.

The fly killer works by luring insects on to an electrified metal grid using ultra-violet light. It uses no chemicals and is pollution free. To use the Fly Killer:

1. Press the switch to the ON position.
2. The light will come on and the grid will become electrically charged.

10. Cleaning, Care and Maintenance



WARNING: Always switch off the power and disconnect the appliance from the power supply before cleaning.

- Clean the collection tray regularly with warm soapy water.
- DO NOT immerse the appliance in water. Wipe the safety guard and external casing with a damp cloth.
- Change the lamps every 12 months.

11. How Often Should UV Lamps Be Changed And Why?

We recommend that UV Lamps are changed every 12 months to ensure maximum efficiency.

The levels of UV produced by fluorescent Lamps deteriorates rapidly throughout the life of the Lamp. Whilst the Lamp will continue to glow blue indefinitely, after approximately 8,000 hours the amount of useful UV (which humans cannot see) drops to a level where it is no longer attractive to flying insects. As a result, UV Lamps must be replaced annually to ensure they remain effective in producing useful levels of UV.

Models	Lamp Type	Product Code
IK-GC1-16	8W	IKS-8W-TUBE
IK-GC1-20	10W	IKS-10W-TUBE
IK-GC1-30	15W	IKS-15W-TUBE
IK-GC1-40	20W	IKS-20W-TUBE

How to order replacement UV Lamps :

Call: 0800 328 5708

Email: sales@flymatic.co.uk

Or visit our website: www.flymatic.co.uk

12. Changing The Lamp

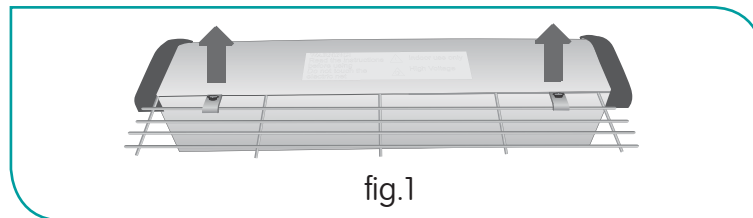


If one of the Lamps fails to come on, remove the two starters on the inside of the unit and swap them over. If the opposite Lamp lights up, then you need to replace the starter. If the same Lamp fails to light up, then you may need to replace the Lamp

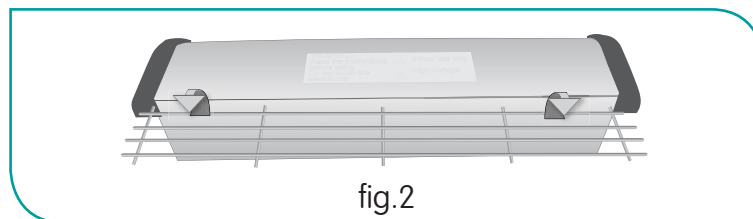
WARNING: Always turn Off the appliance and disconnect from the power supply before changing the Lamp.

WARNING: The Fly grid can retain voltage after the appliance is switched off. Discharge the grid prior to changing the lamps.

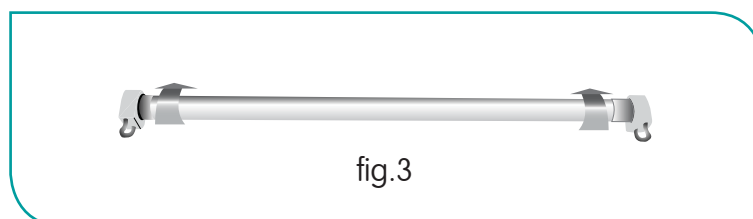
1. Remove the catch tray.
2. Lay the appliance face down.
3. Unscrew the four screws holding the safety guard at the rear of the Fly Killer [Fig. 1].



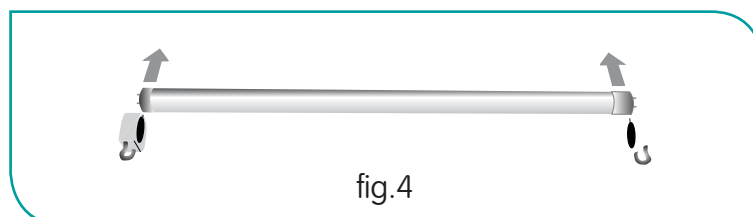
4. Lift up the guard rail [Fig. 2].



5. Holding the ends of the Lamp, twist it 'forwards' in its socket until it clicks [Fig. 3].



6. Slide the Lamp up out of its sockets [Fig. 4].



7. Replace with a new Lamp.
8. Twist the new Lamp 'backwards' to lock it back in place.
9. Replace the guard rail and the screws.

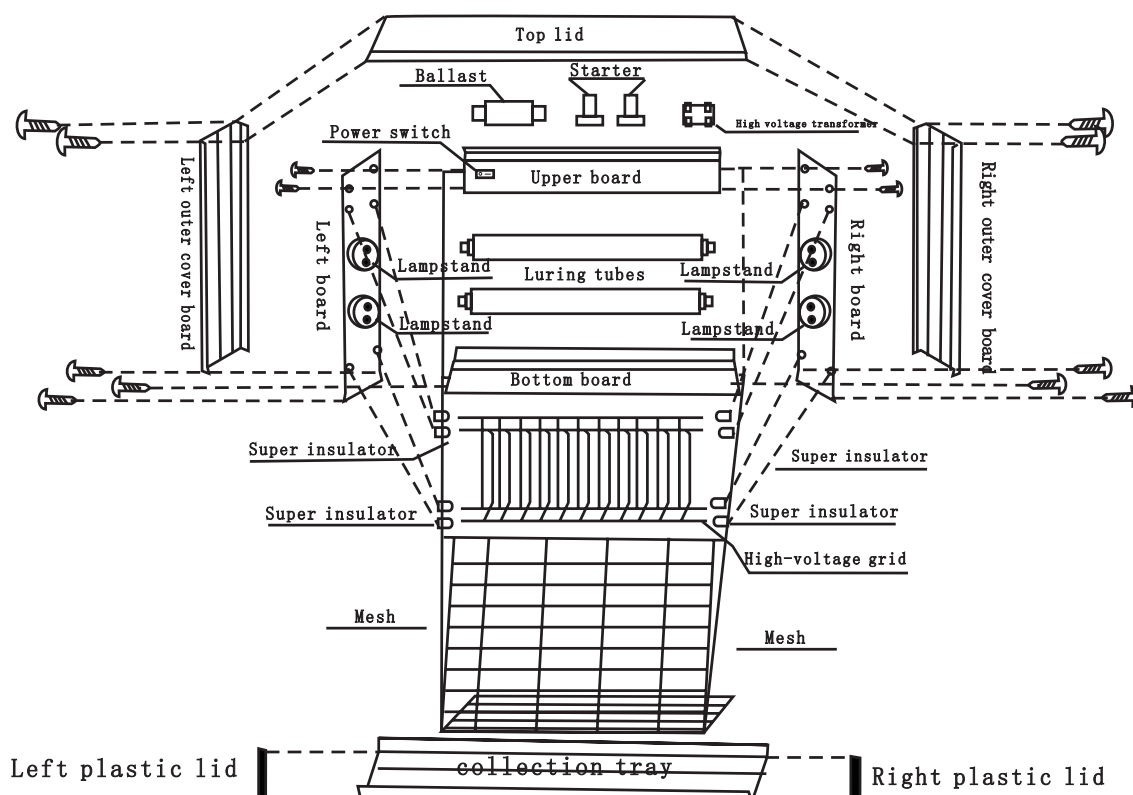
13. Troubleshooting

If your appliance develops a fault, please check the following table before making a call to the help line.

Fault	Probable Cause	Action
The unit is not working	The Unit is not switched on	Check the unit is plugged in correctly and switched on
	Plug and lead are damaged	Call Flymatic agent or qualified technician
	Fuse in the plug has blown	Replace the plug fuse
	Power supply	Check the power supply
	Internal wiring fault	Call Flymatic agent or qualified technician
	Lamp has expired	Refer to 'changing the Lamp' section
	The Lamp is faulty or has not been fitted correctly	

14. Technical Specifications

Model	Voltage	Power	Current	Weight	Dimensions mm
IK-GCI-16	220-240V	26WATTS	0.132A	2.4kg	H263 x W335 x D90
IK-GCI-20	220-240V	33WATTS	0.202A	2.91kg	H313 x W385 x D90
IK-GCI-30	220-240V	40WATTS	0.28A	3.27kg	H313 x W490 x D90
IK-GCI-40	220-240V	45WATTS	0.30A	4.1kg	H364 x W640 x D90



15. Electrical Wiring

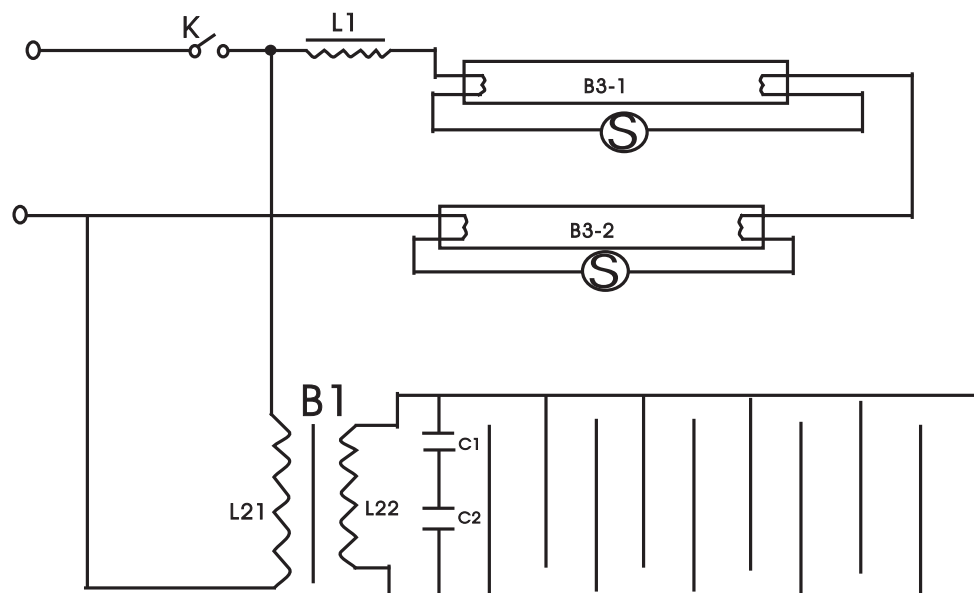
This appliance is supplied with a 3 pin, moulded, BS1363 plug and lead, with a 3 amp fuse as standard. The plug is to be connected to a suitable mains socket.

This appliance is wired as follows:

- Live wire (coloured brown) to terminal marked L
- Neutral wire (coloured blue) to terminal marked N
- Earth wire (coloured green/yellow) to terminal marked E

This appliance must be earthed, using a dedicated earthing circuit.
If in doubt consult a qualified electrician.

Electrical isolation points must be kept clear of any obstructions. In the event of any emergency disconnection being required they must be readily accessible.



L1-ballast
B1-high-voltage transformer
K-power switch
S-starter

C-condenser
B3-1 tube
B3-2 tube

16. Compliance

Flymatic parts have undergone strict product testing in order to comply with regulatory standards and specifications set by international, independent, and federal authorities.

Flymatic products have been approved to carry the following symbols:



WEEE



Flying Insect Control Solutions

www.flymatic.co.uk